



# BRPL Solar City Initiative

Phase I : Dwarka RWA Societies

## About BSES Rajdhani Power Limited

BSES Rajdhani Power Limited (BRPL) is a joint venture between Reliance Infrastructure Limited and Govt of NCT of Delhi with a 51%:49% shareholding. BRPL, along with its sister company BSES Yamuna Power Limited (BYPL), supplies electricity to two-thirds of the national capital.

Panning a geographical area of around 750 sq kms, BRPL is the largest of the three private distribution companies (discoms) in Delhi. The company supplies electricity to around 2.4 million customers, covering a population base of over 9.2million in South and West Delhi.



## BRPL Solar City Initiative

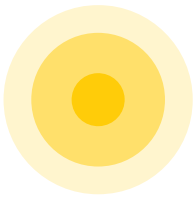
BSES aims to contribute to a greener & cleaner environment by tapping into the energy of the sun. Solar City is a new initiative under which we are facilitating customers in the Installation of rooftop solar plants at their residence. The following activities and objectives are under our purview-

- Facilitating BSES customers in installation, commissioning & maintenance of Rooftop Solar PV Systems
- Integrating with the electricity supplied by BSES through Net Metering (Grid-tied)
- Providing customers with information/access to state of the art technologies & solutions
- Helping customers reduce their electricity bill through dedicated rooftop solar solutions via empanelled vendors
- Providing customers correct energy accounting of solar energy through net metering
- Providing support in availing applicable subsidies from available programs of Government of India

## Rooftop Solar

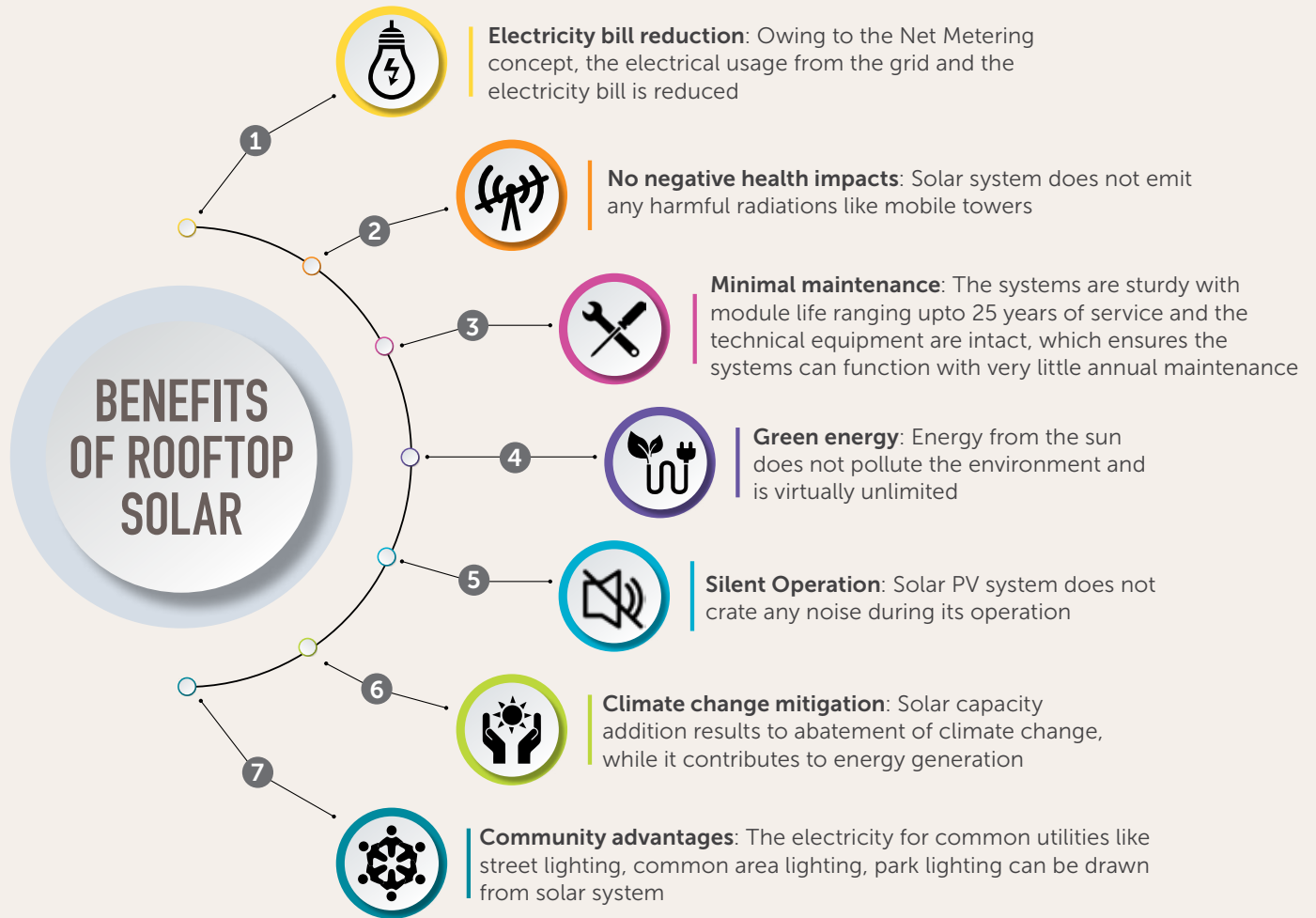
### What is Rooftop Solar?

A Grid connected Rooftop Solar PV system generates electricity from sun using the solar panels mounted on roof of buildings and power is synchronized with electricity Grid. 1 kW of solar PV plant can generate more than 1200 units of electricity in a year.

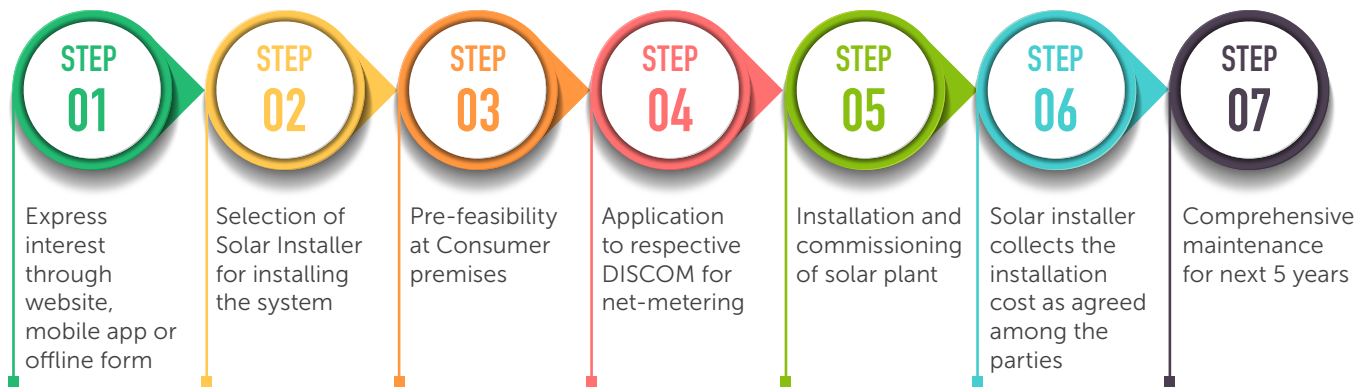


सौर ऊर्जा  
स्वच्छ ऊर्जा





## Steps to install



### HelpDesk

Please feel free to reach out to us in case of any queries. We will try our best to solve the issues swiftly.

Email : [netmetering.brpl@relianceada.com](mailto:netmetering.brpl@relianceada.com)  
 Phone : +91 11 3999 9707 / +91 11 3999 9808 (Ext: 9)  
 Website : [www.solarbSES.com](http://www.solarbSES.com)

**Download the Solar BSES App now**